

SECTION 21, T.6N., R.2E., S.L.B. & M.

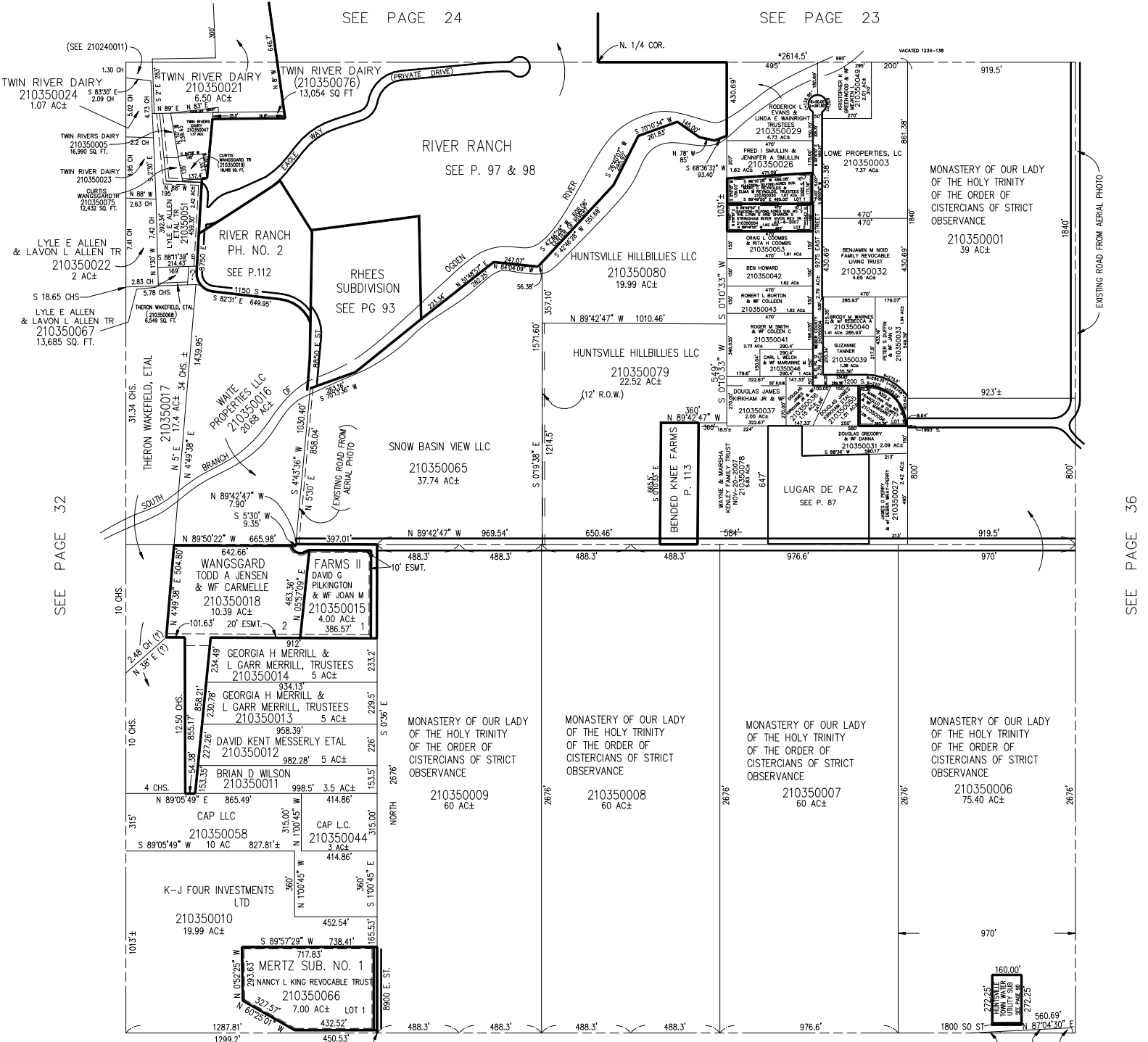
IN WEBER COUNTY

SCALE 1" = 400'

TAXING UNIT: 318

SEE PAGE 24

SEE PAGE 23



SEE PAGE 32

SEE PAGE 36

SEE PAGE 37

* NOTE: DATA ON THE NORTH SECTION LINE BASED ON ORIGINAL PLAT IN BOOK 6, PAGE 64.

**SEE AFTT E#1422589 BK 1819 PG 2772

(SEE 210370005) (SEE 210370009)